

MONTHLY MEMBERSHIP PROGRESS REPORT

District 2 S5

Results as of: 3/31/2024

GMT:

LOCATION TEXAS

GMT CA

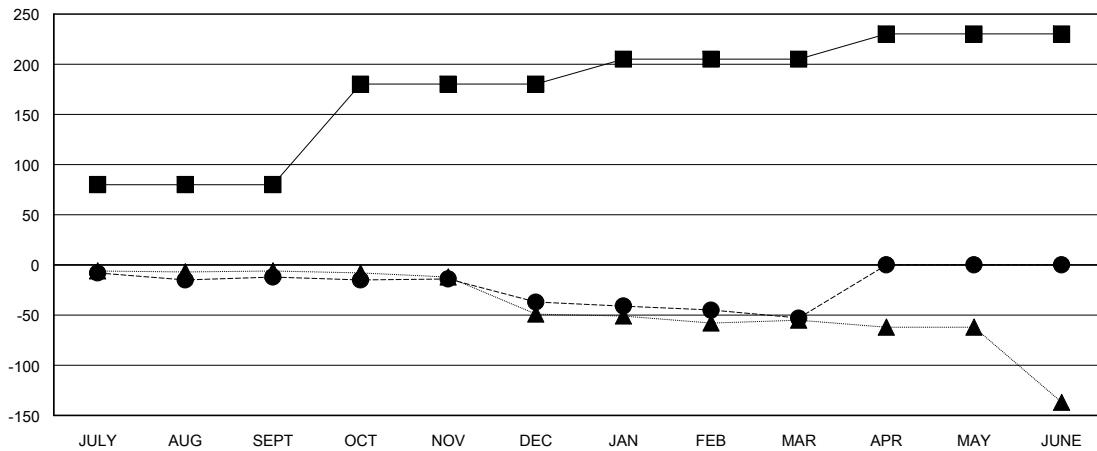
Clubs			
RESULTS FOR 2023-2024			
QUARTER	NEW CLUB GOAL	NEW CLUBS	DROPPED CLUBS
JULY/AUG/SEPT	0	0	1
OCT/NOV/DEC	1	0	0
JAN/FEB/MAR	0	0	0
APR/MAY/JUNE	0	0	0

Members			
RESULTS FOR 2023-2024			
QUARTER	MEMBER GROWTH NET GOAL	MEMBER GROWTH ACTUAL	DROPPED MEMBERS ACTUAL (including transfers)
JULY/AUG/SEPT	80	51	61
OCT/NOV/DEC	100	52	72
JAN/FEB/MAR	25	52	64
APR/MAY/JUNE	25	0	0

GOALS AND ACTUAL NEW CLUBS CUMULATIVE



GOALS AND ACTUAL MEMBERS CUMULATIVE



DROPPED CLUBS: 1	32 CLUBS OF 55 ADDED 1 OR MORE NEW MEMBERS	GENDER DISTRIBUTION	
		MALE 1,256 (58.61%)	FEMALE 887 (41.39%)
DROPPED MEMBERS		TOTAL FAMILY UNIT MEMBERS 416	
DECEASED 17	CLUB CANCELLED 0		
OTHER 180		FAMILY MEMBERS PAYING HALF DUES 212	
TOTAL 197		CLICK HERE FOR CUMULATIVE MEMBERSHIP DATA	